
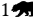







Managing Bandwidth: The Key to Cloud-Assisted Autonomous Driving

Alexander Krentsel¹ Peter Schafhalter¹ Joseph E. Gonzalez²
Sylvia Ratnasamy Scott Shenker Ion Stoica
 UC Berkeley  ICSI

ABSTRACT

Prevailing wisdom asserts that one cannot rely on the cloud for critical real-time control systems like self-driving cars. We argue that we can, and must. Following the trends of increasing model sizes, improvements in hardware, and evolving mobile networks, we identify an opportunity to offload parts of time-sensitive and latency-critical compute to the cloud. Doing so requires carefully allocating bandwidth to meet strict latency SLOs, while maximizing benefit to the car.

1 INTRODUCTION

Autonomous driving has the potential to transform society by reducing road fatalities through the elimination of human error [1], freeing up to one billion hours spent in traffic per day by improving traffic flow [60], and providing mobility to millions of people impacted by disabilities [24]. While limited deployments of autonomous vehicles (AVs) are underway [14], challenges remain such as operation in poor weather conditions and construction zones [22].

To address these challenges, significant efforts have focused on improving the accuracy of the machine learning (ML) models underpinning autonomous driving [16, 52, 61, 76, 88]. However, more accurate models are typically more compute intensive [73, 90]. Because AVs must operate with faster-than-human reaction times (*e.g.*, 390 ms to 1.2 s [45, 87]), deploying models on-vehicle requires a careful navigation of the tradeoffs between runtime and accuracy to ensure that AVs provide both high-quality decision-making and rapid response times [34, 79].

Furthering the challenge of meeting stringent performance requirements, the on-car compute AVs have access to is severely constrained today due to physical power, heat, and stability limits [54], as well as due to economic realities (§3); taken together, the result is an order-of-magnitude less compute² available on state-of-the-art (SOTA) AV hardware compared to cloud, which limits which models can be run in real-time. Access to better compute would offer the opportunity to run larger models with higher accuracy faster, directly translating to improved safety.

We propose turning to the cloud, which offers on-demand access to SOTA hardware and thus provides the opportunity

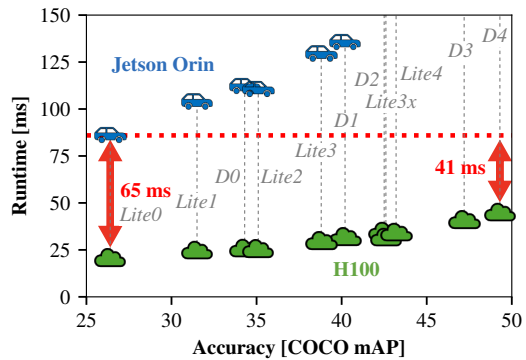


Figure 1: Cloud accelerators can execute more accurate models with lower runtime than hardware designed for autonomous driving. We plot the runtimes of different models in the the EfficientDet [79] family of object detection models when executing on the NVIDIA’s edge-focused Jetson Orin and cloud-focused H100 GPU. Prior work has shown that more accurate object detectors are able to improve driving safety by identifying obstacles at greater distances [33, 72].

to run larger models for AVs. However, data transfers between AVs and the cloud are a major challenge, as AVs have tight real-time execution constraints and cellular networks are highly variable and performance-constrained [53]. At first glance, using the cloud for autonomous driving seems unrealistic; AVs process upwards of 8 Gbps of data [38, 86], an amount that far exceeds the capabilities of today’s 5G cellular networks which target uplink speeds of 100 Mbps despite a theoretical peak of 10 Gbps [44]. Furthermore, system designers maintain well-founded skepticism of using cellular networks in critical real-time systems [81] as AVs require *guaranteed* completion SLOs to achieve safety, which is at odds with the reliability afforded by cellular networks.

We find a way forward with the following observations:

- (1) AV control systems are a collection of individual services with their own inputs and SLOs, which thus can be individually offloaded based on available bandwidth.
- (2) The speedup from remote execution is so large that remote services can tolerate significant data transfer latency, even when running more accurate and expensive models (Fig. 1).
- (3) Remote execution can be done opportunistically while running a local fallback version of the service on-vehicle according to prior work [72]. This way we can ensure that the cloud will strictly improve the accuracy and safety over running everything locally.

¹Both authors contributed equally to this work.

²A single SOTA cloud GPU (H100) can perform over 10× more operations per second than AV-targeted chips like NVIDIA’s DRIVE Orin [3, 10].

The challenge that remains is deciding which services to offload as available bandwidth varies widely.

In this paper, we make three core contributions. First, we make the case that using remote resources for autonomous driving is not only technically and economically feasible, but trends show that it is *necessary and inevitable* as model compute requirements grow exponentially, and cars stay on the road for over a decade (§4). Second, we introduce a method to define and derive *service-level* utility curves that capture service accuracy as a function of bandwidth consumption in order to allocate scarce network bandwidth (§5). Finally, we discuss the implications of using remote resources for safety-critical, latency-sensitive computation (§6). We believe that our approach generalizes to applications beyond autonomous driving, and hope our insights will spur further conversations about the potential of networks to benefit real-time intelligent systems.

2 HOW AUTONOMOUS DRIVING WORKS

At a high level, an AV captures information about its surroundings with a large array of sensors, and processes that data into control commands (*i.e.*, steering, acceleration, and braking). Given that an AV operates in dynamic and high-speed environments, processing must be timely and accurate to ensure safety, with a response time of ~ 400 ms [87].

The computation in an AV is typically structured as a pipeline where each component performs a specific task (*e.g.*, object detection) [34, 86], many of which are ML-based. Because more accurate ML models are generally more compute-intensive [73, 90] and thus exhibit higher latency, constructing an AV pipeline requires careful consideration of the tradeoffs between accuracy and response time shown in Fig. 1.

We observe that this component-pipeline structure lends itself nicely to viewing each component *as a service*, as their tasks define a concrete interface and their implementations select from a diverse set of potential models and algorithms with a latency-accuracy tradeoff. We present the key components using an ML in an AV pipeline, and discuss the types of models on which they rely:

Sensors. The AV pipeline begins with an array of high-fidelity sensors to observe the surroundings; Waymo’s 5th-generation AVs use 29 cameras, as well as 5 lidar and 4 radar systems to generate a 360° view of the world with a range exceeding 300 meters [5]. Similarly, Cruise deploys 16 cameras, 5 lidars, and 21 radars on their AVs [32]. In total, AV sensors generate over 8 Gb of data every second [38, 86] and provide unprocessed snapshots of an AV’s surroundings.

Perception. A collection of ML-based perception modules process the sensor data streams and fuse this processed data into an ego-centric map annotated with nearby obstacles, drivable regions, and traffic laws (*e.g.*, signs, traffic lights).

Perception performs several different tasks such as object detection, object tracking, and lane detection [15, 34] which use different models and form subservices. While there is a large range of perception models for autonomous driving which use different sensor modalities, most of these models employ convolutional neural networks to extract features from images or lidar point clouds [46, 80, 89].

Prediction. Next, the AV uses ML to anticipate the motion of perceived nearby agents (*e.g.*, pedestrians, vehicles, bicyclists) by processing the outputs from perception. Prediction models leverage compute-intensive neural networks such as Transforms to forecast the future positions of nearby agents based on patterns in their motion and behaviors [28, 70, 75].

Planning. Finally, planning generates safe and comfortable motion plans for the AV from the perceived and predicted state of the world. While traditional planners employ search algorithms [47, 65] to generate reliable and explainable motion plans, we anticipate that future planners will use ML based on trends in motion planning research [36, 42, 57, 83].

We select 2D object detection as an example service to examine the tradeoffs of remote resources in-depth. Object detection is a well-studied perception task with a wide variety of open-source models [17, 21, 39, 79] and performs the safety-critical task of identifying and locating nearby obstacles by processing images from the AV’s cameras.

We focus on the EfficientDet [79] family of object detection models. Each model in the family, takes a different resolution image as input, ranging from 320×320 to 1536×1536 , and spanning from lightweight, low-accuracy to compute-intensive but high-accuracy, as shown in Fig. 1 and Tab. 1. Our design (§5) increases the accuracy of an object detection service by allocating bandwidth to run more accurate models (*e.g.*, EfficientDet D3 and EfficientDet D5) on powerful cloud hardware (*i.e.*, H100 GPUs) while meeting a tight latency SLO. As a result, we can improve accuracy over models capable running on AV hardware (*i.e.*, EfficientDet D1 on a Jetson Orin), with the goal of benefiting driving safety.

3 A PRE-EMPTIVE Q&A

We are interested in designing an offloading system that is deployable in the real world taking advantage of the observations made above. However, utilizing the network for mission-critical applications has been viewed with skepticism for valid reasons. We address some of the potential questions that may arise for the reader.

Q: *If there are better SOTA models today, why would AV manufacturers not use them, releasing AVs that are less safe?*

A: While the exact requirements for deploying AVs are subject to debate [48], it is largely accepted that AVs must first surpass human driving abilities in terms of safety. We observe that we are at the cusp of surpassing this threshold as

Waymo, Cruise, and others are rolling out extensive public betas across several U.S. states [2, 7, 14]. These AVs are already safe enough to be on the road; however, we propose that remote resources provide additional capabilities beyond this minimum threshold *e.g.*, by running SOTA models for which the on-vehicle compute is insufficient.

Q: *Why not put better hardware on the car if it exists today?*

A: Better hardware is indeed available today, but is constrained to datacenters for several reasons. First, cars have stringent power and cooling constraints [54] whereas SOTA GPUs have notoriously high power consumption and generate large amounts of heat [8, 10]. Second, AV deployment is inherently an economic problem, and the cost of new computing hardware is skyrocketing. In 2024, an NVIDIA H100 GPU costs \$40k [77] while a new Tesla costs \$30k [18]. Though the pricing and hardware for AV manufacturers is kept secret, the price of publicly available AV hardware is up to 10× lower than SOTA cloud hardware (§4.2).

Furthermore, cars are well-suited to statistical multiplexing: a typical U.S. car owner averages 60.2 minutes of driving per day [69], leaving the car unused for ~23 hours. Despite correlations in vehicle traffic, there are significant opportunities to share a pool of compute among many cars, and can be multiplexed with non-AV workloads when load is low.

However, using the cloud does not exclude improving on-vehicle compute. If highly resource-efficient hardware becomes available, AV vendors can and should deploy it on their cars. What we propose increases flexibility: AV vendors can choose where on the spectrum they want to operate, and when to invest in improving on-vehicle or remote resources.

Q: *Isn't the cost of hardware quickly decreasing?*

A: Yes, but model sizes are rapidly increasing [27, 56, 73], as are input sizes as AVs expand the number and fidelity of their sensors [5, 12]. Furthermore, vehicles have long lifespans: in 2023, the average age of lightweight vehicles driven in the U.S. is 12.5 years [19]. Even if there is a huge leap forward in compute cost, power, and heat efficiency, millions of older vehicles will remain on the road and will require some way to benefit from new capabilities unlocked by larger models.

Q: *Why not upgrade the hardware on older cars as costs lower?*

A: In practice, this depends on the AV deployment model. Companies that operate fleets of AVs can perform upgrades as they own, operate, and maintain all of their vehicles. However, upgrades for personal vehicles are not as easy. As a comparison, recalls are mandatory upgrades that fix critical safety risks such as faulty brake systems [13]. Though recalls are *free* to the consumer, current fix rates are 52-64% [63] as many car owners do not service their vehicles due to service duration, required use, and distance from servicing [82].

Q: *Why not compress models to be smaller to be able to run on the hardware that is in deployment?*

A: Model compression is an active area of focus [23, 67] which typically reduces accuracy to lower compute requirements. This is orthogonal to our approach as compressed models can still be too big or too slow to run on an AV.

Q: *How can we rely on anything on the cloud? What if the network is unreliable, or the cloud fails in some other way?*

A: We emphasize that the network should only be used greedily to improve performance — existing pipelines running on the car have surpassed human safety limits already, and the cloud will further improve car performance where possible. In summary, we present a clear need for remote resources to run the most accurate models for self-driving. While this need is immediate, there are valid concerns around the technical and economic feasibility of using the cloud for safety-critical, real-time computation, which we address in §4.

4 FEASIBILITY: A PATH FORWARD

Latency requirements and AV deployment economics raise questions on the feasibility of using remote resources. We examine these constraints and address these questions in light of network and compute trends today.

4.1 Performance

The stringent performance requirements discussed in §2 lead to the following questions: (1) do cellular networks support data-transfer latencies low enough to access remote resources in real time, and (2) are cloud compute runtimes fast enough to make up for this network latency?

Network. While cellular rollouts over the past decade have promised great peak performance, real-world experience of ping and bandwidth is highly variable which stresses the connection to remote resources. 5G deployment [59] supports 300 Mph speeds, <1 ms tower RTT, and 2.6 million devices per square mile [43]. While the peak maximum total bandwidth provided by 5G connections is 20 Gbps [68], real-world experience varies greatly as deployments are (1) subject to real-world constraints such as interference [78] and (2) configured to match operator preferences on power, cost, and uplink/download bandwidth allocation. We analyze Ookla's Speedtest.net dataset [11] and find that real-world cellular networks provide over 10× more downlink than uplink bandwidth, and consistent latencies despite improvements in bandwidth. 5G deployments target a minimum (5th-percentile) user-experienced bandwidth of 50 Mbps for uplink and 100 Mbps for downlink [44]

We analyze how network conditions impact the runtime of models running in the cloud from the perspective of an AV in Tab. 1, assuming a 5G connection to a nearby datacenter with an RTT of 12 ms and an upload bandwidth of 200 Mbps based on prior 5G measurements [62]. We find that improvements in inference runtime outweigh the network latency

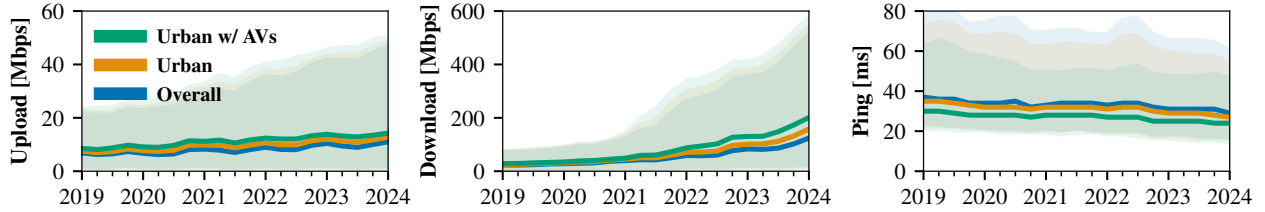


Figure 2: User-experienced cellular network speeds are improving according to Ookla’s SpeedTest.net dataset [11]. We find improvements in upload, download, and ping speeds across the 10th, 50th, and 90th percentiles between 2019 and 2024, capturing the expansion of 5G in 2019 and the shut-down of 3G in 2022. As the data aggregates connections ranging from 2G to 5G, we are unable to report performance by network generation.

Model			Compute		Network	Total	
Name	Accuracy	Input Size	Orin [ms]	H100 [ms]	Transfer [ms]	H100 + Transfer [ms]	Speedup
ED0	34.3	512 × 512	112	26	20	46	2.4×
ED1	40.2	640 × 640	136	32	24	56	2.4×
ED3	47.2	896 × 896	325	41	36	77	4.2×
ED5	51.2	1280 × 1280	1067	65	52	117	9.1×
ED7	53.4	1536 × 1536	1955	101	83	184	10.6×

Table 1: Network and compute time for a selection of object detector models [79] with varying input resolutions. We compute network time using a bandwidth of 200 Mbps and an RTT of 12 ms based on prior measurements [62].

for variants of the EfficientDet object detection model (Fig. 1 and Tab. 1), demonstrating that current cellular networks provide sufficient performance for remote execution.

Compute. We now compare the performance of on-vehicle and cloud compute. The center columns in Tab. 1 provide the runtime of several variants of the EfficientDet (ED) object detection model when executing on NVIDIA’s Jetson Orin, an edge-focused chip for ML inference³, and NVIDIA’s H100, a cloud-focused GPU with top performance on inference tasks according to the MLPerf Inference: Datacenter benchmark [6]. The H100 executes ED models 4 – 19× faster than the Jetson Orin, making previously-infeasible models capable of running within SLO, even when factoring in network time (§5).

4.2 Cost

Given we have shown that network and compute performance is sufficient to make this approach technically feasible, here we examine whether it is *economically* feasible.

Network. Commercial network usage is primarily charged by the GB [40]. Consumer-facing plans vary in price [41] from as low as \$0.001/GB in Israel to over \$2 in Norway. This wide range in pricing requires careful consideration in deployment: Tab. 2 shows the cheapest *consumer*-facing (*i.e.*, SIM card) cost per GB of data in a selection of countries, along with the computed cost per hour of streaming 50 Mbps of data. We note that we expect wholesale pricing, especially geofenced to a particular region, to be considerably cheaper.

Rank	Country	\$/GB	\$/Hour
1	Singapore	\$0.07	\$1.65
2	Netherlands	\$0.36	\$8.04
3	Norway	\$2.09	\$47.07
4	United States	\$0.75	\$16.88
5	Finland	\$0.26	\$5.81
–	China	\$0.27	\$6.14
–	Israel	\$0.001	\$0.02
–	10th pct	\$0.062	\$1.39
–	Median	\$0.37	\$8.42

Table 2: Network costs ranked highest by AV readiness score [49]. We include China as a major AV market [26], Israel as the cheapest cellular market, and the 10th percentile and median global country by network price. Hourly rates assume a network utilization of 50 Mbps.

In countries such as Israel, the price of cellular data transmission is trivial at \$0.02 per hour of driving. In other countries, including the U.S. price of \$16.88 per hour, prices are considerably higher and present an economic obstacle to using remote resources. In countries with high cellular data prices, operators may choose to reduce costs by selectively utilizing remote resources to aid in high-stress driving environments *e.g.*, during poor visibility due to weather and busy urban areas. We further observe a strong downwards trend in the cost of cellular data: from 2019–2024, the median price per GB worldwide decreased 4× from \$5.25 to \$1.28 [41], and we expect prices to continue to drop.

Compute. Cloud providers offer competitive access to GPUs: Lambda Labs hourly pricing ranges from \$0.80 for an NVIDIA A6000 GPU to \$2.49 for an NVIDIA H100 GPU [4].

Sharing compute costs across a fleet of vehicles presents a significant opportunity to reduce costs even further compared to installing dedicated compute hardware in each car. The average driver in the U.S. drives only 60.2 minutes per

³The Jetson Orin uses the same system on a chip as NVIDIA’s DRIVE Orin which is designed to power autonomous driving capabilities [9].

day [69], *i.e.*, a vehicle utilization of 4.2%. This underutilization is more pronounced for personal vehicles than autonomous ride-hailing services, for which we expect utilization to be $\sim 59\%$ based on the ratio of peak to average hourly Uber rides in New York City [30]. Considering this underutilization, the cost of purchasing a single H100 GPU ($\sim \$40k$ [77]) is equivalent to renting an H100 in the cloud for an 44 years for the average American driver, and 3 years for an average autonomous ride-hailing vehicle.

Cloud compute offers a number of advantages. Cloud access allows operators to configure which compute resources to use based on compute requirements and cost sensitivity. Remote resources cannot be stolen or damaged in an accident. Furthermore, model serving systems can optimize resource utilization by batching and scheduling requests [25, 35, 71], resulting in further price improvements.

Total cost. We find remote resources are cost-effective for personal vehicles and cost-competitive for ride-hailing. We estimate total hourly cost of remote resources at \$3.88, with \$1.39 from the network⁴ and \$2.49 from compute for an H100. We emphasize that the true cost of cloud compute is likely lower due to better efficiency when operating at scale. Considering utilization, we find that a personal AV can operate for 28 years and a ride-hailing AV for 2 years, before matching the cost of purchasing an H100 GPU ($\sim \$40k$), indicating that remote resources are economically viable.

5 UTILITY-INFORMED METHOD

The goal of our approach is to select which subset of the services that make up the AV control pipeline to run in the cloud, and how to allocate bandwidth between them. We use perception models, particularly the EfficientDet (ED) family [79] described in §2, as our guiding example. Each service may have multiple models that can run in the cloud.

To achieve this goal, we consider three key dimensions:

- (1) **Latency SLOs** are set for each service in the AV pipeline. For object detection, we select an SLO of 150 ms based on prior work [33]. A service’s ability to meet its SLO depends on the runtime of the model on the chosen hardware and, for remote services, the data transmission time.
- (2) **Bandwidth** varies over time (§4.1), and dictates how quickly data is transmitted. Allocating higher bandwidth to a service allows its input to arrive to the cloud faster, leaving more time for compute within the latency SLO envelope.
- Given that downlink bandwidth is $\sim 10\times$ higher than uplink [44, 62] and the output of object detection is relatively

⁴Mobile networks are cost-effective at the 10th percentile of global prices which includes major markets such as India, Italy, and Israel. We use the 10th percentile of global prices as an estimate because (1) we expect most of the world to follow downwards price trends as seen in Israel, and (2) wholesale, regional pricing for AV providers may be significantly cheaper.

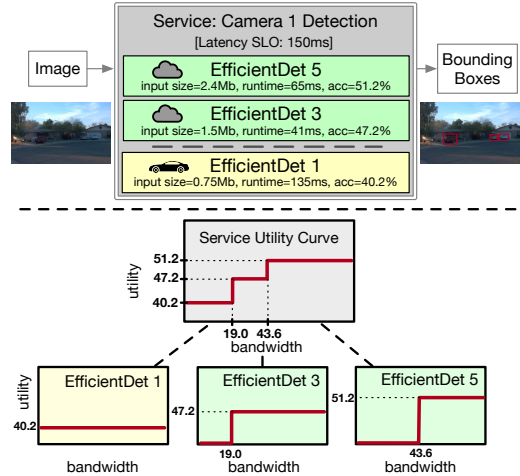


Figure 3: Utility curves for a service with 3 object detection models.

small (~ 4 KB), the majority is propagation time (ping RTT) and uplink transmission time (bandwidth \times input size).

(3) **Accuracy** measures how well an ML model performs its task, and is typically computed offline on a pre-defined test dataset (*e.g.*, COCO [55]). Object detection uses mean average precision [74] (mAP) as an accuracy metric, which captures a model’s ability to correctly identify objects and place their bounding boxes.

To capture the interaction of these concepts, we extend prior work [20] which creates *utility curves* that represent how allocated bandwidth provides utility to an application. We use service accuracy as a proxy for utility to an AV⁵ which increases as sufficient bandwidth is made available to run more accurate models.

We show the construction of a utility curve in Fig. 3 for an object detection service using EfficientDet D1 (on-car) and ED3/ED5 (cloud). As discussed in §2, these are production-class detection models which take different image resolutions and provide distinct latency-accuracy trade-offs. In the ED family, ED1 is the most accurate model that can run on-vehicle within the latency SLO. ED3 and ED5 provide higher accuracy, but are only capable of running within the latency SLO on datacenter hardware; this requires sufficient bandwidth to transfer inputs to the cloud. If available bandwidth is too low, network latency is too high and the SLO is violated, making the utility is 0.

Each cloud model has a tipping point at which the bandwidth B is sufficient to meet the service’s latency SLO t_{SLO} given the RTT t_{RTT} , execution time t_{exec} , and input size s :

$$t_{SLO} > t_{total} = \frac{s}{B} + t_{RTT} + t_{exec}$$

⁵We note that predicting each component’s contribution to overall AV driving accuracy is an open problem [34, 66], and is typically approximated by extensive testing of the end-to-end AV pipeline in simulation [31].

Consequently, the utility function for a single model is a step function, with the step from 0 to the model accuracy at:

$$B_{\text{step}} = s / (t_{\text{SLO}} - t_{\text{RTT}} - t_{\text{exec}})$$

For ED3 and ED5, using the numbers in Fig. 3, the tipping point bandwidths are 19.0 Mbps and 43.6 Mbps respectively, resulting in the curves at the bottom of Fig. 3. The utility curve for ED1 is flat as it runs on-car and always meets the latency SLO regardless of allocated bandwidth.

To construct the service-level bandwidth utility curve, we compose all individual model utility curves. As we choose to run only the best feasible cloud model at a time, we take the *maximum* utility across all curves as shown in Fig. 3. This composed curve provides the maximum utility (*i.e.*, accuracy) our service can achieve given an amount of bandwidth, while the on-car model provides a guaranteed minimum.

Allocating Bandwidth. Given a collection of *services* with utility curves, these curves can be used to formulate a utility maximization problem for allocating bandwidth across all services with any operator-specified policy constraints. The utility maximization problem may be converted to an integer linear program [51] for which solvers such as Gurobi [37] can find optimal bandwidth allocations. Prior work proposes max-min bandwidth allocation methods using utility curves [20, 50]. We leave further discussion of these methods to future work.

6 DISCUSSION

We conclude with takeaways to guide further research on using remote resources for autonomous driving. We address both the implications of our proposed approach as well as high-level conclusions.

Takeaway 1: *Dynamic driving environments require dynamic utility curves.* AVs navigate a wide variety of driving environments which affect the performance of a model. Changes in weather, time of day, and driving location create a “distribution shift” [29, 58] which may cause model accuracy to degrade if the observed data differs from the training dataset. This will necessitate dynamic utility curves, requiring AVs to monitor performance and update bandwidth allocations to respond to changing driving environments. We underscore that dynamic utility curves also unlock the opportunity to use specialized models optimized for specific environments, such as driving at night, which improves driving safety.

Takeaway 2: *Bandwidth can be partitioned across space and time.* While we consider services that transmit data simultaneously, bandwidth may also be partitioned across time. In this model, services receive time slots in which they may transmit data using all available bandwidth. Optimizing the order of service transmission can minimize latency, which has similarities to prior work in scheduling [35, 85].

Takeaway 3: *Deployments at scale will increase resource contention and generate new opportunities.* As more AVs rely on remote resources, they will place a greater load on cellular networks which is magnified by correlations in driving patterns (*e.g.*, rush hour). Network outages from excess load already impact AVs [64] highlighting the need for fleet-wide bandwidth allocation. Scale also affects our model of remote resources. In this work, we adopt an “infinite resources” view of the cloud. In practice, a fleet of AVs may exhaust cloud resources which raises the question of how to model the availability of remote resources: as infinite, a shared pool, or a static allocation per vehicle. These considerations affect how AVs use remote resources and may impact the utility functions. While scale stresses the available resource, scale also provides an opportunity to benefit safety via collaboration *e.g.*, by sharing data to reduce blind spots [72, 91].

Takeaway 4: *Cellular bandwidth is the primary source of latency.* While 5G targets device-to-tower latencies as low as 1 ms [44], uplink bandwidths of around 100-200 Mbps [62] cover only a fraction of the estimated 8 Gbps of data AVs produce. At these rates, transmitting 1 Mb of data takes 5-10 ms. As backhaul bandwidth is large [84], device-to-cell-tower bandwidth is the bottleneck. This leads to the remarkable implication that co-locating compute resources with cell towers has a relatively minor impact on latency, indicating deploying resources in nearby datacenters is sufficient as increasing device-to-server distance from 0 km to 320 km increases latency from 6 ms to 12 ms [62].

Takeaway 5: *Remote resources are cost-effective.* We re-visit the economic trends which reveal that remote resources are cost-effective (§4.2). While the price of data transfers varies wildly from \$0.001-\$2.00 per GB (Tab. 1), network prices are rapidly decreasing with the the median price worldwide dropping 4× between 2019 and 2024. In contrast, compute prices are high at around \$2.49 per hour for a remote H100 GPU compared to an amortized cost of \$2.28 per hour when deploying an H100 on-vehicle. However, the low utilization of vehicles makes remote resources more cost-effective, as idle remote resources can be re-purposed.

Remote resources have the potential to improve driving safety by running more accurate models more quickly. While reliability of the network remains a concern that must be mitigated by on-vehicle fault tolerance methods, existing 5G deployments provide sufficient bandwidth and latency to access remote resources. We find that bandwidth is the limiting factor to using remote resources, and present a design that uses utility curves to allocate bandwidth across the services comprising an AV. We argue that these trends demonstrate that the use of remote resources is necessary and inevitable to maximize driving safety, and believe that addressing this challenge opens exciting new opportunities for research.

REFERENCES

- [1] Automated Vehicles for Safety. <https://www.nhtsa.gov/technology-innovation/automated-vehicles-safety>.
- [2] Cruise to launch robotaxi services in austin, phoenix before end of 2022. <https://techcrunch.com/2022/09/12/cruise-to-launch-robotaxi-services-in-austin-phoenix-before-end-of-2022/>.
- [3] Drive agx orin developer kit. <https://developer.nvidia.com/drive/agx>. Accessed 2024-6-11.
- [4] Gpu cloud. <https://lambdalabs.com/service/gpu-cloud>. Accessed 2024-6-23.
- [5] Introducing the 5th Generation Waymo Driver. <https://blog.waymo.com/2020/03/introducing-5th-generation-waymo-driver.html>.
- [6] Mlperf inference: Datacenter benchmark suite results. <https://mlcommons.org/benchmarks/inference-datacenter/>. Accessed 2024-6-23.
- [7] Next stop for waymo one: Los angeles. <https://waymo.com/blog/2022/10/next-stop-for-waymo-one-los-angeles.html>.
- [8] NVIDIA A100 Specifications. <https://www.nvidia.com/en-us/data-center/a100/>.
- [9] Nvidia drive developer faq. <https://developer.nvidia.com/drive/faq>. Accessed 2024-6-23.
- [10] Nvidia h100 tensor core gpu. <https://www.nvidia.com/en-us/data-center/h100/>. Accessed 2024-6-11.
- [11] Speedtest by ookla global fixed and mobile network performance maps. <https://registry.opendata.aws/speedtest-global-performance>.
- [12] Waymo one autonomous robotaxi first ride: Way mo' better than driving? <https://tinyurl.com/yvku75kx>.
- [13] *Honda News*, Jul 2023.
- [14] Scaling waymo one safely across four cities this year. <https://waymo.com/blog/2024/03/scaling-waymo-one-safely-across-four-cities-this-year/>, March 2024.
- [15] Baidu. Apollo 3.0 Software Architecture. <https://tinyurl.com/mhd6dfka>.
- [16] Mayank Bansal, Alex Krizhevsky, and Abhijit Ogale. Chauffeurnet: Learning to drive by imitating the best and synthesizing the worst. *arXiv preprint arXiv:1812.03079*, 2018.
- [17] Alexey Bochkovskiy, Chien-Yao Wang, and Hong-Yuan Mark Liao. YOLOv4: Optimal speed and accuracy of object detection. 2020.
- [18] Eric Brandt. 2024 tesla model 3. <https://www.kbb.com/tesla/model-3/>, March 2024. Accessed 2024-6-11.
- [19] Bureau of Transportation Statistics. Average age of automobiles and trucks in operation in the united states, January 2024.
- [20] Zhiruo Cao and E W Zegura. Utility max-min: an application-oriented bandwidth allocation scheme. In *IEEE INFOCOM '99. Conference on Computer Communications. Proceedings. Eighteenth Annual Joint Conference of the IEEE Computer and Communications Societies. The Future is Now (Cat. No.99CH36320)*, volume 2, pages 793–801 vol.2. IEEE, 1999.
- [21] Nicolas Carion, Francisco Massa, Gabriel Synnaeve, Nicolas Usunier, Alexander Kirillov, and Sergey Zagoruyko. End-to-end object detection with transformers. In *Computer Vision–ECCV 2020: 16th European Conference, Glasgow, UK, August 23–28, 2020, Proceedings, Part 1* 16. Springer, 2020.
- [22] Max Chafkin. Even after \$100 billion, self-driving cars are going nowhere. <https://www.bloomberg.com/news/features/2022-10-06/even-after-100-billion-self-driving-cars-are-going-nowhere>, October 2022.
- [23] Tejalal Choudhary, Vipul Mishra, Anurag Goswami, and Jagannathan Sarangapani. A comprehensive survey on model compression and acceleration. *Artificial Intelligence Review*, 53(7):5113–5155, October 2020.
- [24] Henry Claypool, Amitai Bin-Nun, and Jeffrey Gerlach. Self-Driving Cars: The Impact on People with Disabilities. *Newton, MA: Ruderman Family Foundation*, 2017.
- [25] Daniel Crankshaw, Xin Wang, Guilio Zhou, Michael J Franklin, Joseph E Gonzalez, and Ion Stoica. Clipper: A Low-Latency Online Prediction Serving System. In *Proceedings of the 14th USENIX Conference on Networked Systems Design and Implementation (NSDI)*, pages 613–627, 2017.
- [26] Derek Chiao, Johannes Deichmann, Kersten Heineke, Ani Kelkar, Martin Kellner, Elizabeth Scarinci, Dmitry Tolstinev. Autonomous vehicles moving forward: Perspectives from industry leaders. Technical report, McKinsey, January 2024.
- [27] Alexey Dosovitskiy, Lucas Beyer, Alexander Kolesnikov, Dirk Weissenborn, Xiaohua Zhai, Thomas Unterthiner, Mostafa Dehghani, Matthias Minderer, Georg Heigold, Sylvain Gelly, et al. An image is worth 16x16 words: Transformers for image recognition at scale. *arXiv preprint arXiv:2010.11929*, 2020.
- [28] Scott Ettinger, Kratarth Goel, Avikalp Srivastava, and Rami Al-Rfou. Scaling motion forecasting models with ensemble distillation, 2024.
- [29] Angelos Filos, Panagiotis Tigkas, Rowan McAllister, Nicholas Rhinehart, Sergey Levine, and Yarin Gal. Can autonomous vehicles identify, recover from, and adapt to distribution shifts? In *International Conference on Machine Learning*, pages 3145–3153. PMLR, 2020.
- [30] FiveThirtyEight. Uber pickups in new york city. <https://www.kaggle.com/datasets/fivethirtyeight/uber-pickups-in-new-york-city>. Accessed 2024-6-23.
- [31] Daniel J. Fremont, Tommaso Dreossi, Shromona Ghosh, Xiangyu Yue, Alberto L. Sangiovanni-Vincentelli, and Sanjit A. Seshia. Scenic: A Language for Scenario Specification and Scene Generation. In *Proceedings of the 40th Annual ACM SIGPLAN Conference on Programming Language Design and Implementation (PLDI)*, June 2019.
- [32] General Motors. 2018 Self-driving safety report. <https://www.gm.com/content/dam/company/docs/us/en/gmcom/gmsafetyreport.pdf>.
- [33] Ionel Gog, Sukrit Kalra, Peter Schafhalter, Joseph E Gonzalez, and Ion Stoica. D3: A Dynamic Deadline-Driven approach for Building Autonomous Vehicles. In *Proceedings of the Seventeenth European Conference on Computer Systems*, pages 453–471, 2022.
- [34] Ionel Gog, Sukrit Kalra, Peter Schafhalter, Matthew A. Wright, Joseph E. Gonzalez, and Ion Stoica. Pylot: A Modular Platform for Exploring Latency-Accuracy Tradeoffs in Autonomous Vehicles. In *Proceedings of the IEEE International Conference on Robotics and Automation (ICRA)*, pages 8806–8813. IEEE, 2021.
- [35] Arpan Gujarati, Reza Karimi, Safya Alzayat, Antoine Kaufmann, Ymir Vigfusson, and Jonathan Mace. Serving DNNs like Clockwork: Performance Predictability from the Bottom Up. In *Proceedings of the 14th USENIX Symposium on Operating Systems Design and Implementation (OSDI)*, November 2020.
- [36] Cole Gulino, Justin Fu, Wenjie Luo, George Tucker, Eli Bronstein, Yiren Lu, Jean Harb, Xinlei Pan, Yan Wang, Xiangyu Chen, et al. Waymax: An accelerated, data-driven simulator for large-scale autonomous driving research. *Advances in Neural Information Processing Systems*, 36, 2024.
- [37] Gurobi Optimization, LLC. Gurobi Optimizer Reference Manual, 2023.
- [38] Florian Götz. The data deluge: What do we do with the data generated by avs? <https://blogs.sw.siemens.com/polarion/the-data-deluge-what-do-we-do-with-the-data-generated-by-avs/>, January 2021.
- [39] Kaiming He, Xiangyu Zhang, Shaoqing Ren, and Jian Sun. Deep residual learning for image recognition. In *Proceedings of the IEEE conference on computer vision and pattern recognition*, pages 770–778, 2016.
- [40] Ralph Heredia. How to Cost-Effectively manage IoT data plans. <https://www.zipitwireless.com/blog/how-to-cost-effectively->

- manage-iot-data-plans, June 2023. Accessed: 2024-6-15.
- [41] Dan Howdle. Worldwide mobile data pricing 2023. <https://www.cable.co.uk/mobiles/worldwide-data-pricing/>. Accessed: 2024-6-13.
- [42] Yihan Hu, Jiazhi Yang, Li Chen, Keyu Li, Chonghao Sima, Xizhou Zhu, Siqi Chai, Senyao Du, Tianwei Lin, Wenhai Wang, et al. Planning-oriented autonomous driving. In *Proceedings of the IEEE/CVF Conference on Computer Vision and Pattern Recognition*, pages 17853–17862, 2023.
- [43] International Telecommunication Union. Capabilities of IMT-2030. Technical report, International Telecommunication Union, 2022.
- [44] International Telecommunications Union. Report ITU-R M.2410-0: Minimum requirements related to technical performance for IMT-2020 radio interface(s). Technical Report M.2410-0, International Telecommunications Union, 2017.
- [45] Gunnar Johansson and Kåre Rumar. Drivers’ brake reaction times. *Human factors*, 13(1):23–27, 1971.
- [46] Andrej Karpathy. [cvpr’21 wad] keynote - andrej karpathy, tesla. <https://youtu.be/g6bOwQdCJrc>, June 2021.
- [47] Christos Katrakazas, Mohammed Quddus, Wen-Hua Chen, and Lipika Deka. Real-time Motion Planning Methods for Autonomous On-Road Driving: State-of-the-art and Future Research Directions. *Transportation Research Part C: Emerging Technologies*, 60:416–442, 2015.
- [48] Philip Koopman and Michael Wagner. Autonomous vehicle safety: An interdisciplinary challenge. *IEEE Intell. Transp. Syst. Mag.*, 9(1):90–96, 2017.
- [49] KPMG. Self-driving cars: The next revolution. <https://institutes.kpmg.us/content/dam/institutes/en/manufacturing/pdfs/2017/self-driving-cars-next-revolution-new.pdf>.
- [50] Alok Kumar, Sushant Jain, Uday Naik, Anand Raghuraman, Nikhil Kasinadhuni, Enrique Cauich Zermeno, C Stephen Gunn, Jing Ai, Björn Carlin, Mihai Amarandei-Stavila, Mathieu Robin, Aspi Sigantoria, Stephen Stuart, and Amin Vahdat. BwE: Flexible, hierarchical bandwidth allocation for WAN distributed computing. In *Proceedings of the 2015 ACM Conference on Special Interest Group on Data Communication*, SIGCOMM ’15, pages 1–14, New York, NY, USA, August 2015. Association for Computing Machinery.
- [51] L.S. Lasdon. *Optimization Theory for Large Systems*. Dover books on Mathematics. Dover Publications, 2002.
- [52] Zhaoqi Leng, Pei Sun, Tong He, Dragomir Anguelov, and Mingxing Tan. Pvrtransformer: Point-to-voxel transformer for scalable 3d object detection, 2024.
- [53] Yang Li, Hao Lin, Zhenhua Li, Yunhao Liu, Feng Qian, Liangyi Gong, Xianlong Xin, and Tianyin Xu. A nationwide study on cellular reliability: measurement, analysis, and enhancements. In *Proceedings of the 2015 ACM SIGCOMM 2015 Conference*, SIGCOMM ’15, pages 597–609, New York, NY, USA, August 2015. Association for Computing Machinery.
- [54] Shih-Chieh Lin, Yunqi Zhang, Chang-Hong Hsu, Matt Skach, Md E. Haque, Lingjia Tang, and Jason Mars. The Architectural Implications of Autonomous Driving: Constraints and Acceleration. In *Proceedings of the 23rd International Conference on Architectural Support for Programming Languages and Operating Systems (ASPLOS)*, pages 751–766, 2018.
- [55] Tsung-Yi Lin, Michael Maire, Serge Belongie, James Hays, Pietro Perona, Deva Ramanan, Piotr Dollár, and C Lawrence Zitnick. Microsoft CoCo: Common Objects in Context. In *Proceedings of the European Conference on Computer Vision (ECCV)*, pages 740–755. Springer, 2014.
- [56] Zhuang Liu, Hanzhi Mao, Chao-Yuan Wu, Christoph Feichtenhofer, Trevor Darrell, and Saining Xie. A convnet for the 2020s. In *Proceedings of the IEEE/CVF Conference on Computer Vision and Pattern Recognition*, pages 11976–11986, 2022.
- [57] Yiren Lu, Justin Fu, George Tucker, Xinlei Pan, Eli Bronstein, Rebecca Roelofs, Benjamin Sapp, Brandyn White, Aleksandra Faust, Shimon Whiteson, et al. Imitation is not enough: Robustifying imitation with reinforcement learning for challenging driving scenarios. In *2023 IEEE/RSJ International Conference on Intelligent Robots and Systems (IROS)*, pages 7553–7560. IEEE, 2023.
- [58] Andrey Malinin, Neil Band, German Chesnokov, Yarin Gal, Mark JF Gales, Alexey Noskov, Andrey Ploskonosov, Liudmila Prokhorenkova, Ivan Provilkov, Vatsal Raina, et al. Shifts: A dataset of real distributional shift across multiple large-scale tasks. *arXiv preprint arXiv:2107.07455*, 2021.
- [59] Marvell. Investor day 2020. Technical report, Marvell, October 2020.
- [60] Michele Bertoncello, and Dominik Wee. Ten Ways Autonomous Driving Could Redefine the Automotive World. <https://tinyurl.com/2srpyv8d>.
- [61] Norman Mu, Jingwei Ji, Zhenpei Yang, Nate Harada, Haotian Tang, Kan Chen, Charles R. Qi, Runzhou Ge, Kratarth Goel, Zoey Yang, Scott Ettinger, Rami Al-Rfou, Dragomir Anguelov, and Yin Zhou. Most: Multi-modality scene tokenization for motion prediction, 2024.
- [62] Arvind Narayanan, Xumiao Zhang, Ruiyang Zhu, Ahmad Hassan, Shuowei Jin, Xiao Zhu, Xiaoxuan Zhang, Denis Rybkin, Zhengxuan Yang, Zhuoqing Morley Mao, Feng Qian, and Zhi-Li Zhang. A variegated look at 5G in the wild: performance, power, and QoE implications. In *Proceedings of the 2021 ACM SIGCOMM 2021 Conference*, SIGCOMM ’21, pages 610–625, New York, NY, USA, August 2021. Association for Computing Machinery.
- [63] National Highway Traffic Safety Administration. NHTSA 2022 annual report safety recalls. Technical report, National Highway Traffic Safety Administration, March 2023.
- [64] Laya Neelakandan and Cano Ricardo. Cruise blames outside lands for driverless car traffic fiasco in san francisco. <https://www.sfchronicle.com/bayarea/article/robotaxi-backup-18293208.php>, August 2023.
- [65] Brian Paden, Michal Čáp, Sze Zheng Yong, Dmitry Yershov, and Emilio Frazzoli. A Survey of Motion Planning and Control Techniques for Self-Driving Urban Vehicles. *IEEE Transactions on Intelligent Vehicles*, 1(1):33–55, 2016.
- [66] Jonah Philion, Amlan Kar, and Sanja Fidler. Learning to Evaluate Perception Models using Planner-Centric Metrics. In *Proceedings of the IEEE Conference on Computer Vision and Pattern Recognition (CVPR)*, pages 14055–14064, 2020.
- [67] Antonio Polino, Razvan Pascanu, and Dan Alistarh. Model compression via distillation and quantization. *arXiv preprint arXiv:1802.05668*, 2018.
- [68] Qualcomm. What is 5g? Technical report, Qualcomm.
- [69] Brian Tefft Rebecca Steinbach. American driving survey: 2022. Technical report, AAA Foundation for Traffic Safety, September 2023.
- [70] Nicholas Rhinehart, Kris M Kitani, and Paul Vernaza. R2P2: A Reparameterized Pushforward Policy for Diverse, Precise Generative Path Forecasting. In *Proceedings of the European Conference on Computer Vision (ECCV)*, pages 772–788, 2018.
- [71] Francisco Romero, Qian Li, Neeraja J Yadwadkar, and Christos Kozyrakis. Infaas: Automated model-less inference serving. In *USENIX Annual Technical Conference*, pages 397–411, 2021.
- [72] Peter Schafhalter, Sukrit Kalra, Le Xu, Joseph E Gonzalez, and Ion Stoica. Leveraging cloud computing to make autonomous vehicles safer. In *2023 IEEE/RSJ International Conference on Intelligent Robots and Systems (IROS)*, pages 5559–5566. IEEE, 2023.
- [73] Jaime Sevilla, Lennart Heim, Anson Ho, Tamay Besiroglu, Marius Hobbhahn, and Pablo Villalobos. Compute trends across three eras of machine learning. In *2022 International Joint Conference on Neural Networks (IJCNN)*, pages 1–8. IEEE, 2022.

- [74] Aditya Sharma. Mean average precision (mAP) using the COCO evaluator. <https://pyimagesearch.com/2022/05/02/mean-average-precision-map-using-the-coco-evaluator/>, May 2022. Accessed: 2024-6-25.
- [75] Shaoshuai Shi, Li Jiang, Dengxin Dai, and Bernt Schiele. Motion transformer with global intention localization and local movement refinement. *Advances in Neural Information Processing Systems*, 35:6531–6543, 2022.
- [76] Shaoshuai Shi, Li Jiang, Dengxin Dai, and Bernt Schiele. Mtr++: Multi-agent motion prediction with symmetric scene modeling and guided intention querying. *IEEE Transactions on Pattern Analysis and Machine Intelligence*, 2024.
- [77] Anton Shilov. Nvidia’s h100 ai gpus cost up to four times more than amd’s competing mi300x — amd’s chips cost \$10 to \$15k apiece; nvidia’s h100 has peaked beyond \$40,000: Report. <https://www.tomshardware.com/tech-industry/artificial-intelligence/nvidias-h100-ai-gpus-cost-up-to-four-times-more-than-amds-competing-mi300x-amds-chips-cost-dollar10-to-dollar15k-apiece-nvidias-h100-has-peaked-beyond-dollar40000>, February 2024.
- [78] Maraj Uddin Ahmed Siddiqui, Faizan Qamar, Faisal Ahmed, Quang Ngoc Nguyen, and Rosilah Hassan. Interference management in 5G and beyond network: Requirements, challenges and future directions. *IEEE Access*, 9:68932–68965, 2021.
- [79] Mingxing Tan, Ruoming Pang, and Quoc V. Le. EfficientDet: Scalable and Efficient Object Detection. In *Proceedings of the IEEE Conference on Computer Vision and Pattern Recognition (CVPR)*, 2020.
- [80] Jigang Tang, Songbin Li, and Peng Liu. A review of lane detection methods based on deep learning. *Pattern Recognition*, 111:107623, 2021.
- [81] Jeff Tao. Addressing the challenges of Real-Time data sharing in IoT. <https://www.rtinsights.com/addressing-the-challenges-of-real-time-data-sharing-in-iot/>, July 2023. Accessed: 2024-6-19.
- [82] Cambridge Mobile Telematics. The challenges of increasing vehicle recall completions. <https://www.cuntelematics.com/blog/automotive-blog/the-challenges-of-increasing-vehicle-recall-completions/>, January 2024. Accessed: 2024-6-12.
- [83] Siyu Teng, Xuemin Hu, Peng Deng, Bai Li, Yuchen Li, Yunfeng Ai, Dongsheng Yang, Lingxi Li, Zhe Xuanyuan, Fenghua Zhu, et al. Motion planning for autonomous driving: The state of the art and future perspectives. *IEEE Transactions on Intelligent Vehicles*, 2023.
- [84] Orawan Tipmongkolsilp, Said Zaghoul, and Admela Jukan. The evolution of cellular backhaul technologies: Current issues and future trends. *IEEE communications surveys & tutorials*, 13(1):97–113, 2010.
- [85] Alexey Tumanov, Timothy Zhu, Jun Woo Park, Michael A. Kozuch, Mor Harchol-Balter, and Gregory R. Ganger. TetriSched: Global Rescheduling with Adaptive Plan-ahead in Dynamic Heterogeneous Clusters. In *Proceedings of the 11th European Conference on Computer Systems (EuroSys)*, pages 35:1–35:16, 2016.
- [86] Nicolo Valigi. Lessons Learned Building a Self-Driving Car on ROS. https://roscon.ros.org/2018/presentations/ROSCon2018_LessonsLearnedSelfDriving.pdf, 2018.
- [87] Benjamin Wolfe, Bobbie Seppelt, Bruce Mehler, Bryan Reimer, and Ruth Rosenholtz. Rapid holistic perception and evasion of road hazards. *Journal of experimental psychology: general*, 149(3):490, 2020.
- [88] Xiaoyang Wu, Li Jiang, Peng-Shuai Wang, Zhijian Liu, Xihui Liu, Yu Qiao, Wanli Ouyang, Tong He, and Hengshuang Zhao. Point transformer v3: Simpler, faster, stronger. *arXiv preprint arXiv:2312.10035*, 2023.
- [89] Tianwei Yin, Xingyi Zhou, and Philipp Krahenbuhl. Center-based 3d object detection and tracking. In *Proceedings of the IEEE/CVF conference on computer vision and pattern recognition*, pages 11784–11793, 2021.
- [90] Xiaohua Zhai, Alexander Kolesnikov, Neil Houlsby, and Lucas Beyer. Scaling vision transformers. In *Proceedings of the IEEE/CVF Conference on Computer Vision and Pattern Recognition*, pages 12104–12113, 2022.
- [91] Xumiao Zhang, Anlan Zhang, Jiachen Sun, Xiao Zhu, Y Ethan Guo, Feng Qian, and Z Morley Mao. Emp: Edge-assisted multi-vehicle perception. In *Proceedings of the 27th Annual International Conference on Mobile Computing and Networking*, pages 545–558, 2021.